

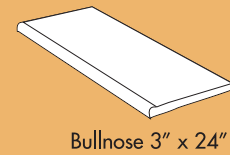


Cohiba Tan 6" x 24"
Hotel Lobby

HAVANA

TRUCOLOR™
Rectified, through-body porcelain

Havana		
Compare...	TRUCOLOR™ Rectified, through-body porcelain	Natural Wood
Easy Maintenance & Low Cost of Ownership – does not require expensive refinishing, sealing, staining or specialty cleaning products	✓ YES	NO
Impervious to Water Absorption – outdoor installation or wet areas such as bathrooms or kitchens	✓ YES	NO
Unaffected by Everyday Occurrences – high heels, pet nails, moving furniture, foot traffic, etc.	✓ YES	NO
Functionality – frostproof, stain resistant, color permanence, fire resistant and hygienic	✓ YES	NO
Commercial Application – does not show wear from high traffic	✓ YES	NO
Slip Resistant – passes ADA recommendation for Coefficient of Friction (C.O.F.)	✓ YES	NO
Environmentally Friendly – protects our forestry resources	✓ YES	NO



SHADE VARIATION			
V1	V2	V3	V4
UNIFORM APPEARANCE	SLEIGHT VARIATION	MODERATE VARIATION	RANDOM VARIATION

KEY FEATURES							
WATER ABSORPTION	BREAKING STRENGTH	PEI RATING	CHEMICAL RESISTANCE	C.O.F. WET	C.O.F. DRY	RESISTANCE TO STAINING	MOHS
0.082%	504 LBS	V	YES	0.73	0.83	YES	9

PACKING LIST						
RANGE	SIZE IN INCHES	CARTON		PALLET		WEIGHT/CARTON
		PCS	SQ. FT.	CTN	SQ. FT.	
Floor Tiles	6" x 24"	14	13.637	40	545.48	62.04
Floor Tiles	12" x 24"	8	15.75	32	504.03	71.66
Bullnose	3" x 24"	16				37.20 lbs



Step Into Your World
www.mediterranea-usa.com



Italian Craftsmanship,
MADE IN THE USA



HAVANA

Mambo Red 6" x 24"

Havana. The look of sun-bleached tropical island shutters and doors in a fully rectified, through-body porcelain tile reminiscent of the sights, sounds and smells of "Old Havana's" Colonial Spanish architecture. A mambo drumbeat. Sugar cane and tobacco fields. Tropical beaches and the fine aroma of a Cohiba cigar. To achieve this exotic stained and weathered wood "look," which is unique to the marketplace, an assortment of rich, colored clays have been used in the production process.

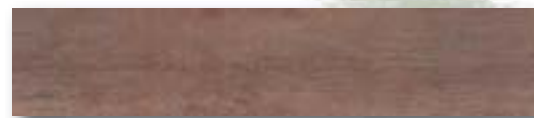
TRUCOLOR™

Rectified, through-body porcelain

Havana is created using Mediterranea's exclusive TruColor technology – double loaded porcelain with random color mixing of clays penetrating throughout the entire tile



Cross section of rectified, through-body porcelain



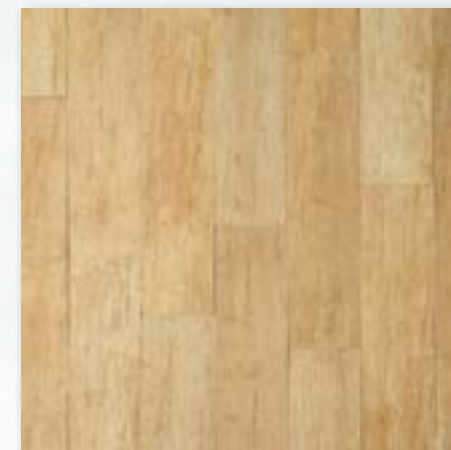
Cherry 6" x 24"



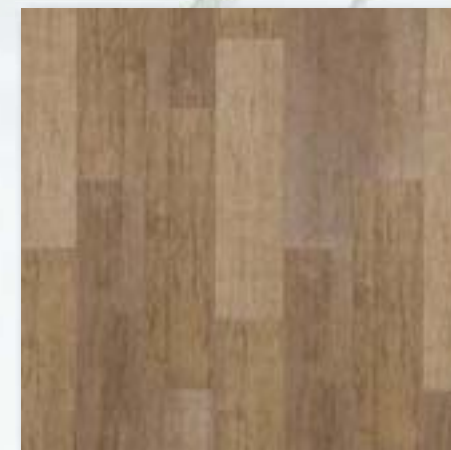
Cherry 12" x 24"



Sugarcane (White)
6" x 24"



Tropicana (Gold)
6" x 24"



Cohiba (Tan)
6" x 24"



Mambo (Red)
6" x 24"



Tobacco (Brown)
6" x 24"



Cherry
6" x 24"



Sugarcane (White)
12" x 24"



Tropicana (Gold)
12" x 24"



Cohiba (Tan)
12" x 24"



Mambo (Red)
12" x 24"



Tobacco (Brown)
12" x 24"